



Rabbit anti Androgen Receptor (AR) (Paired S210) Polyclonal Antibody

Alternative Name(s): androgen receptor

Order Information

- **Description:** Androgen Receptor (AR) (Paired S210)
- **Catalogue:** 602-690
- **Lot:** See label
- **Size:** 100ug/200ul
- **Host:** Rabbit
- **Clone:** nan
- **Application:** IHC(P), WB
- **Reactivity:** Hu, Ms, Rt

ANTIGEN PREPARATION

A synthetic peptide surrounding the epitope –EASGA- without phosphorylation. This sequence is identical among human, rat, mouse, dog

BACKGROUND

The androgen receptor (AR), a member of nuclear receptor family, is essential for the growth of prostate cancer cells. The phosphorylation of AR is induced by growth factors and elevated in hormone-refractory prostate tumors. It's been reported the signal pathway of the PI3K/AKT, Src to be responsible for phosphorylation of AR at Ser213/210 and Ser81. The abnormal activation of AR is observed in many diseases, such as prostate cancer.

PURIFICATION

The Rabbit IgG is purified by Epitope Affinity Purification

FORMULATION

This affinity purified antibody is supplied in sterile Phosphatebuffered saline (pH7.2) containing antibody stabilizer

SPECIFICITY

This antibody recognizes ~110 kDa of human AR protein. It also reacts with mouse and rat. The other species are not tested.

STORAGE

The antibodies are stable for 24 months from date of receipt when stored at –20oC to –70oC. The antibodies can be stored at 2oC-8oC for three month without detectable loss of activity. Avoid repeated freezing-thawing cycles.

APPLICATIONS/SUGGESTED WORKING DILUTIONS*

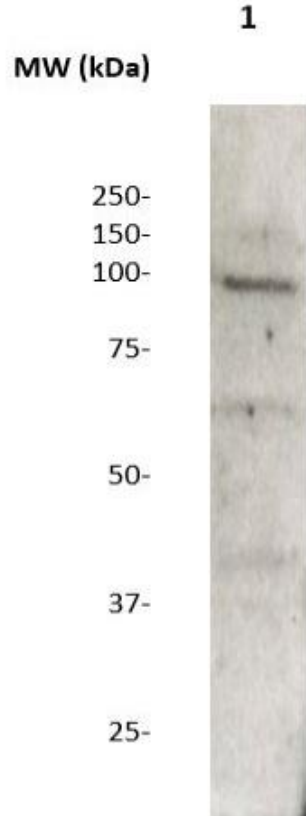
- Western Blot: 0.1-1 µg/ml
- ELISA: 0.01-0.1 µg/ml
- Immunoprecipitation: 2-5 µg/ml
- IHC: 2-10 µg/ml
- Flow cytometry: Not tested
- Molecular Weight: 110.0
- Positive Control: Kidney Tissue
- Cellular Location: Cell Membrane

*Optimal dilutions should be determined by researchers for the specific applications.

FOR RESEARCH USE ONLY.

AbboMax, Inc 2528 Qume Drive, Suite 8, San Jose, California 95131, USA
1 408-573-1898 (Tel). 1 408-573-1858 (Fax). www.abbomax.com info@abbomax.com

DATA ATTACHMENTS



Western Blot: The whole lysate derived from LNCaP (20 ug/lane) immunoblotted by Rabbit anti - AR (pared S210) (Cat# 602-690) at 1:500. Observed a major immunoreactive band at molecular weight ~110 kDa.

REFERENCES

FOR RESEARCH USE ONLY.